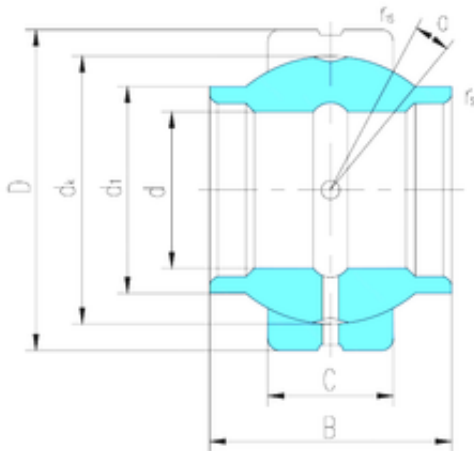




NTN BEARING CORP.

17 mm x 30 mm x 17 mm LS GEEW17ES plain bearings

Bearing No. GEEW17ES



GEEW17ES Bearing 2D drawings and 3D CAD models

Size	17x30x17 mm
Bore Diameter	17 mm
Outer Diameter	30 mm
Width	17 mm
d	17 mm
D	30 mm
B	17 mm
C	10 mm
d1	21 mm
dk	25 mm
r min.	0,3 mm
r1 min.	0,3 mm
Angle	7 °
Weight	0,043 Kg
Basic dynamic load rating (C)	21 kN